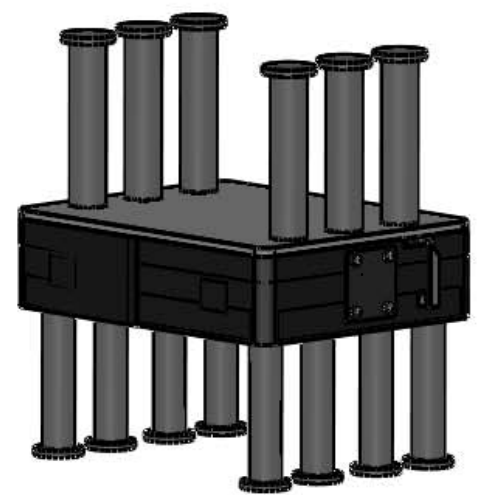
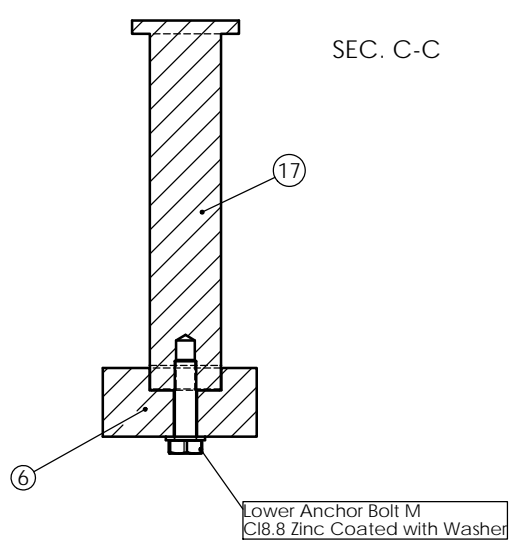
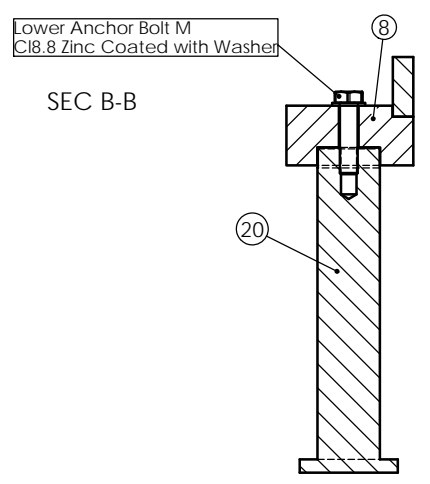
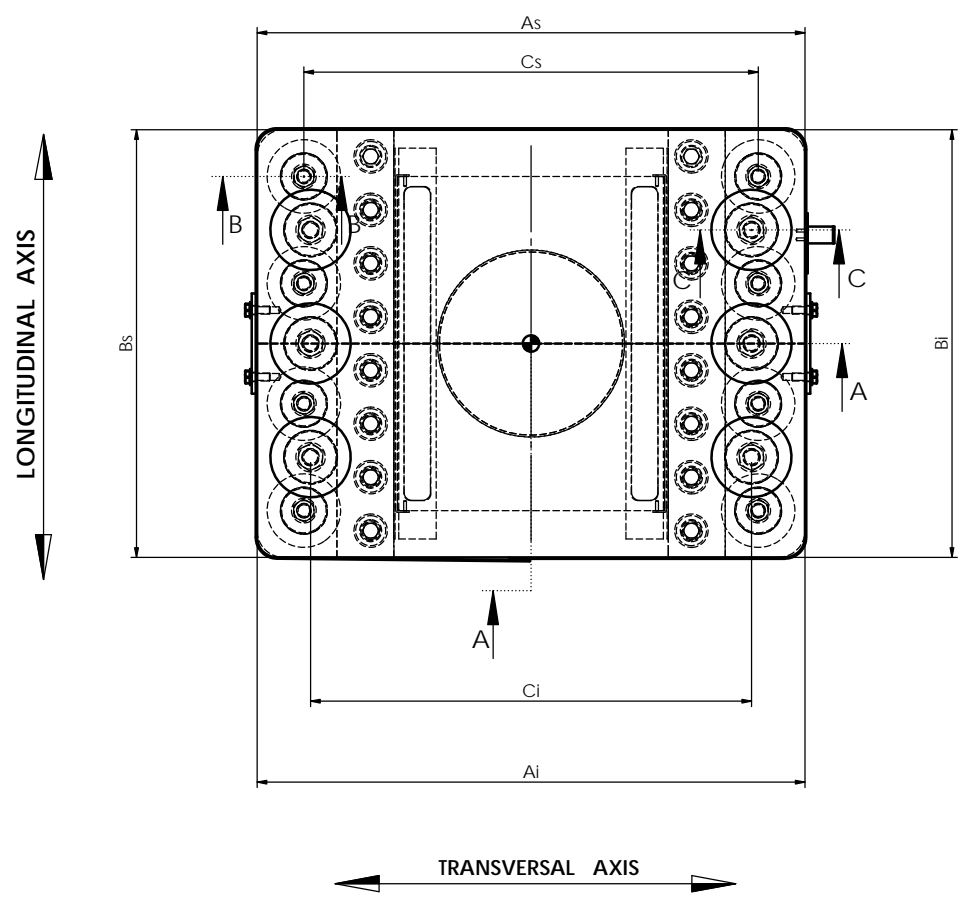
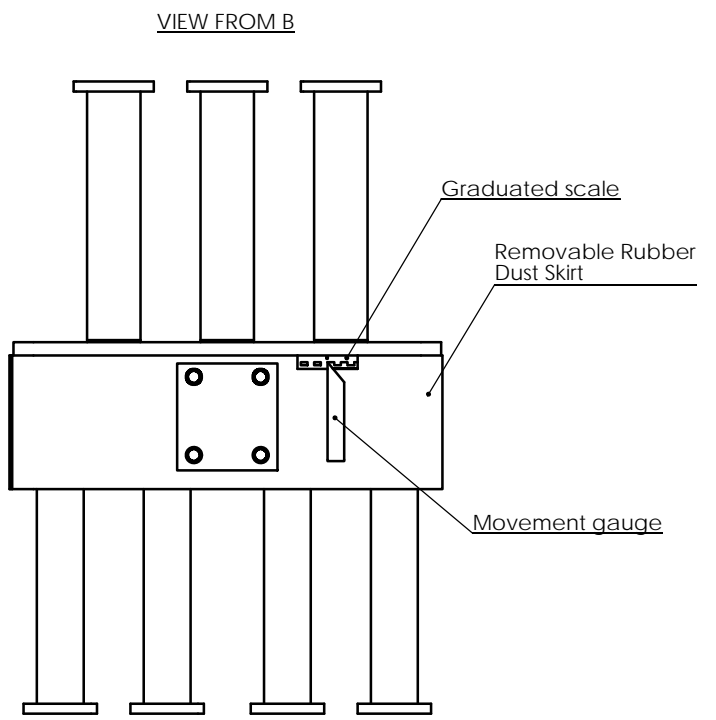
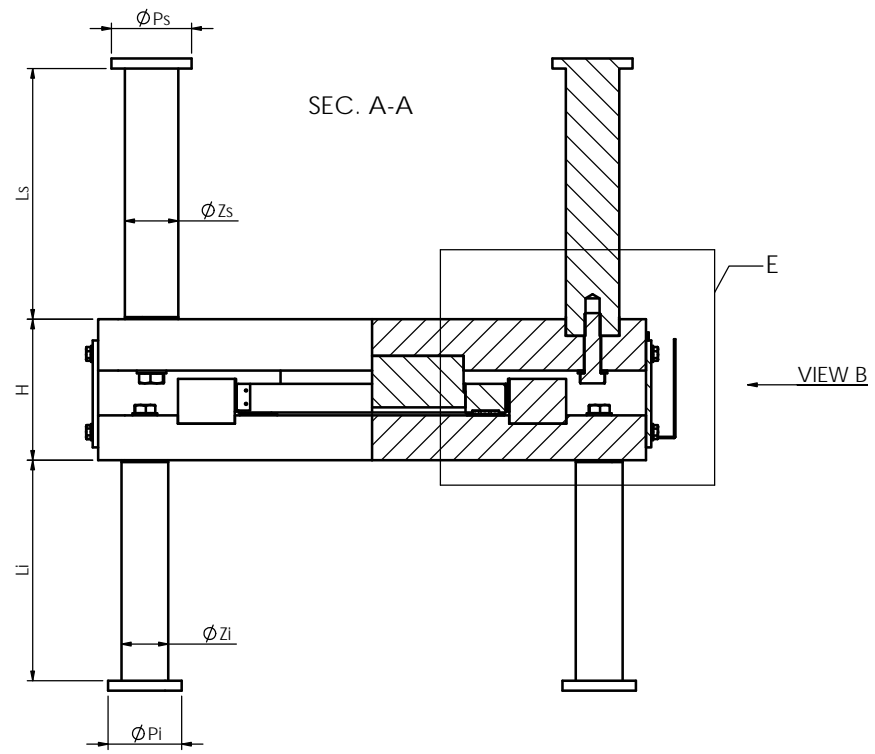


H-Max Horizontal Load Bearing Guided
Position: -

Type	Q.ty	Code	Max. Design Loads [kN]			Movement [mm]		Total Rotation [mrad]	Weight [kg]
			VERT.	HORIZ.	UPLIFTING	LONG.	TRANS.		
HLBG	-	EN 1337-8	-	ULS -	-	+	-	±0.01	-

AGOM International Reference: XU/XXXXX



NOTE A: PROTECTIVE ANTICORROSION CYCLE ACCORDING TO EN 1337-9
 1 Sand-blasting at white metal SA2.5
 2 Bicomponent epoxidic covering at high thickness Silver Grey color RAL7001
 Minimum thickness dry film a) Exposed surface: 250 micron
 b) Worked surfaces and contact surfaces of concrete: 70 micron

DESIGN TEMPERATURE: -°C
 FOR BEARING HEIGHT THE TOLERANCE IS ACCORDING TO EN1337
 FOR STRUCTURAL DETAILS AND DIMENSIONS SEE THE CALCULATION REPORT

Pos.	Quantity	Part Name	Material	Note
27	2	Mating Surface	X5CrNiMo1712 - EN 10088-2	-
20	8	Lower Anchor Bar	S275JR - EN10025	-
17	6	Upper Anchor Bar	S275JR - EN10025	-
16	1	Seal	Neoprene Exp.	-
15	1	Movable Plate	S355JR - EN10025	A
14	1	Upper Plate	S355JR - EN10025	A
13	2	Guide Sliding Surface	Dumetal	-
12	2	Mating Surface	X5CrNiMo1712 - EN 10088-2	-
11	16	Guide Bolt	Steel Zinc Coated	-
10	2	Lateral Guide Bar	S355JR - EN10025	A
9	2	Removable Red Plate	S235JR (Red Painted) - EN10025	-
8	1	Sliding Plate	S355JR - EN10025	A
7	2	Flat PTFE	PTFE - EN1337	-
6	1	Lower Plate	S355JR - EN10025	A

Revision	00	Object	First Issue	Date Last modified	12/11/2014
Drawn by	Gianni Ruco	Checked by	Daniele Colombo	Approved by	M.Battaini

AGOM
 IDEAL ENGINEERING AND MANUFACTURE
 AGOM INTERNATIONAL Srl
 Via Mesero, 12
 20010 Ossona (MI)

Guided horizontal load bearing Typical drawing	Drawing number	Scale
H-Max HLBG	01646CD	1:10

The information contained in this drawing is the sole property of AGOM INTERNATIONAL Srl.
 Any reproduction in part or whole without permission is prohibited.