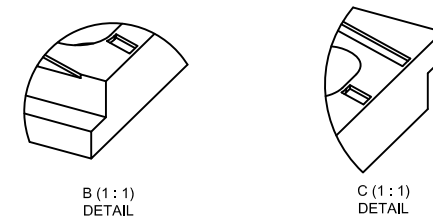
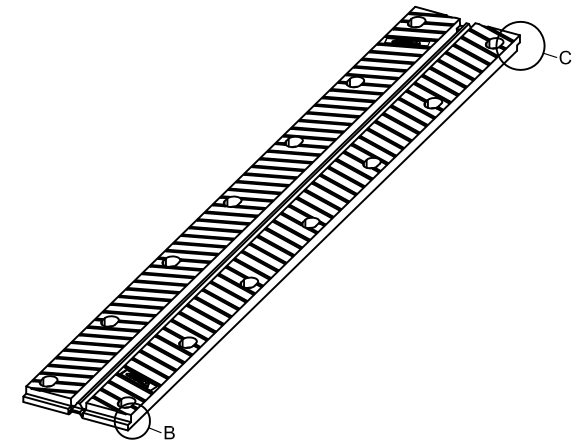
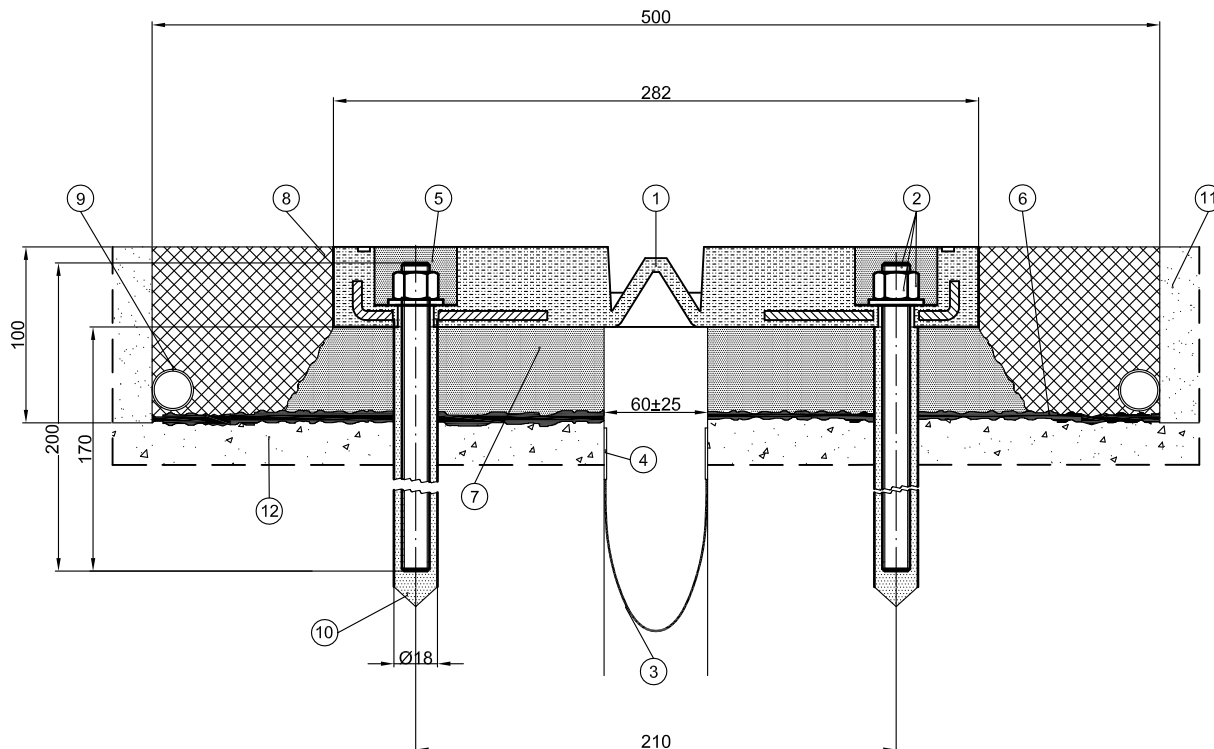


A-A  
ASSEMBLY DETAIL



Type	LONGITUDINAL Movement [mm]	Weight [Kg/pcs]
AGWJ 50	±25	32

\*On Request The Joint Could Be Produced According To Different Standard And Different Compound

12	Concrete	-	-	-
11	Asphalt	-	-	-
10	Anchor Bar Grouting	-	-	Kimitech EP-AR
9	Drain Pipe	-	-	PVC ø16 øe22 mm
8	Transition Strip	-	-	-
7	Bedding Mortar	-	-	-
6	Two-Component Epoxide Primer	-	-	(OPTION)
5	Bolt Hole Sealer	-	-	Tecnoseal 88
4	Thixotropic Epoxide Bonding System	-	-	Kimitech EP-TX
3	Waterproof Strip	-	-	K IB 160
2	Anchor Bars + Washers + Nuts	M 14	EN 20898	Cl. 8.8 Zinc Plated Steel
1	Expansion Joint	-	CNR 10018*	Rubber 60 ShA + Steel

POS.	DESCRIPTION	NOTE	STANDARD	MATERIAL
DATE	15/09/2011	OBJECT	INSTALLATION MATERIALS	REVISION
				03
OBJECT			DRAWN NOT IN SCALE	
AGWJ 50 JOINT				
"2T" INSTALLATION PROCEDURE			DRAWN: DC	
			CHECKED: MB	
			APPROVED: RC	
			DWG N°	
AGOM INTERNATIONAL S. r. l.			00693/2T	
Via Mesero, 12				
20010 Ossona (MI)				
COPYRIGHT RESERVED TO AGOM INTERNATIONAL SRL				