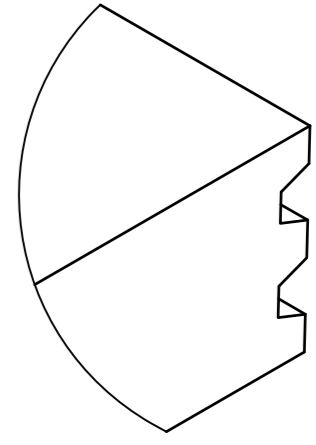


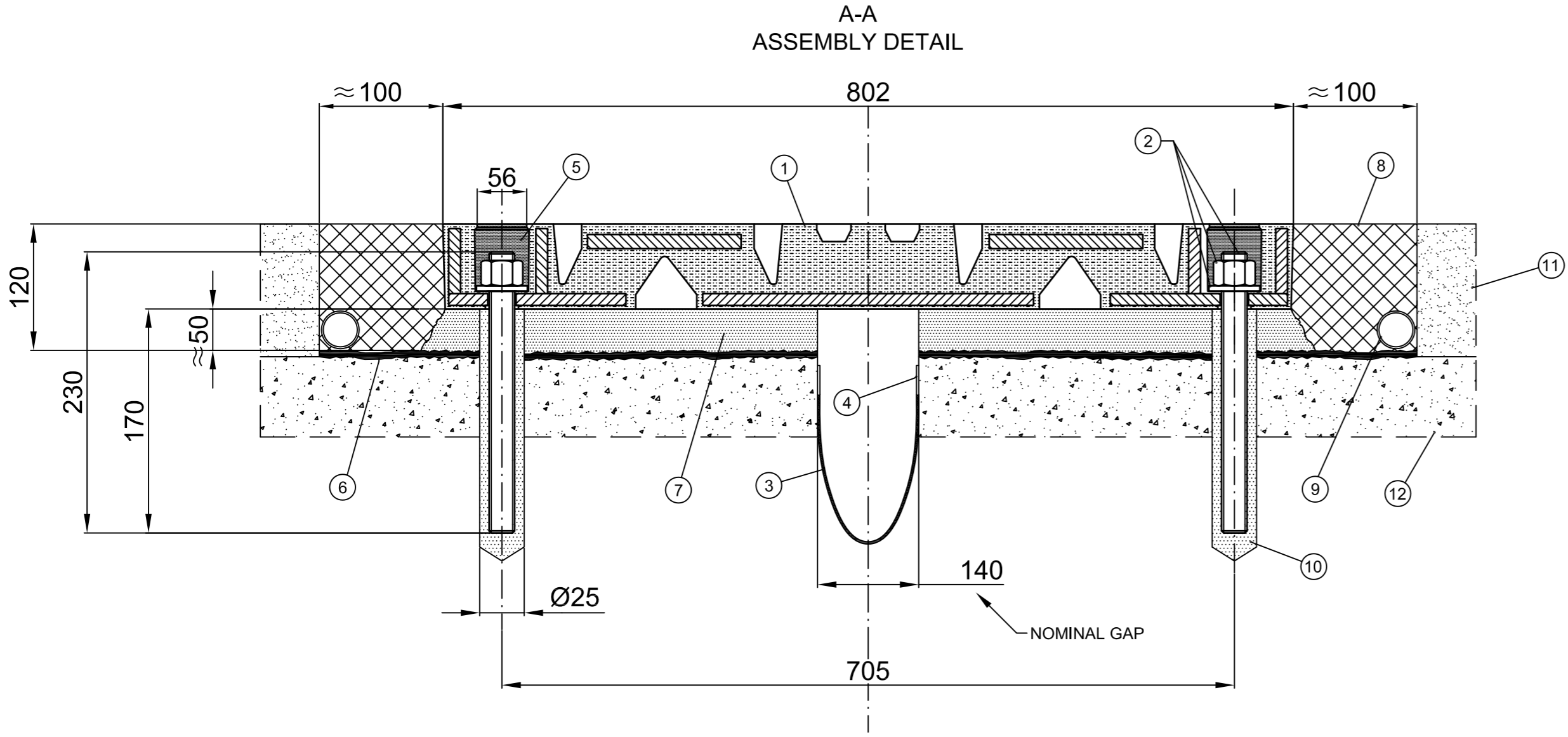
B
DETAIL



C
DETAIL

Type	LONGITUDINAL Movement [mm]	Weight [Kg]
AGFLEXJ 200	±100	270

*On Request The Joint Could Be Produced According To Different Standard And Different Compound



POS.	DESCRIPTION	NOTE	STANDARD	MATERIAL
12	Concrete	-	-	-
11	Asphalt	-	-	-
10	Anchor Bar Grouting	-	-	K Kimitech EP-AR
9	Drain Pipe	-	(ON REQUEST)	PVC øi16 øe22 mm
8	Transition Strip	-	(NOT SUPPLIED)	Wabocrete II
7	Bedding Mortar	-	(NOT SUPPLIED)	Masterflow 524
6	Two-Component Epoxide Primer	-	(IF NECESSARY)	-
5	Bolt Hole Sealer	-	-	Tecnoseal 88
4	Thixotropic Epoxide Bonding System	-	-	K Kimitech EP-TX
3	Waterproof Strip	-	-	NW fabric + rubber
2	Anchor Bars + Washers + Nuts	M 20	EN 20898	Cl. 8.8 Zinc Plated Steel
1	Expansion Joint	-	CNR 10018*	Rubber 60 ShA + Steel

DATE	24/03/2014	OBJECT	MATERIALS	REVISION	08
OBJECT				DRAWN NOT IN SCALE	
AGFLEXJ 200 JOINT "2T" INSTALLATION PROCEDURE				DRAWN: GR CHECKED: DC APPROVED: MB	
		AGOM INTERNATIONAL S. r. l. Via Mesero, 12 20010 Ossona (MI)		DWG N° 00566	
COPYRIGHT RESERVED TO AGOM INTERNATIONAL SRL					