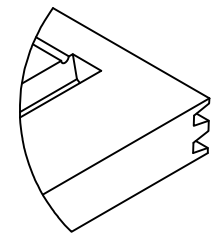
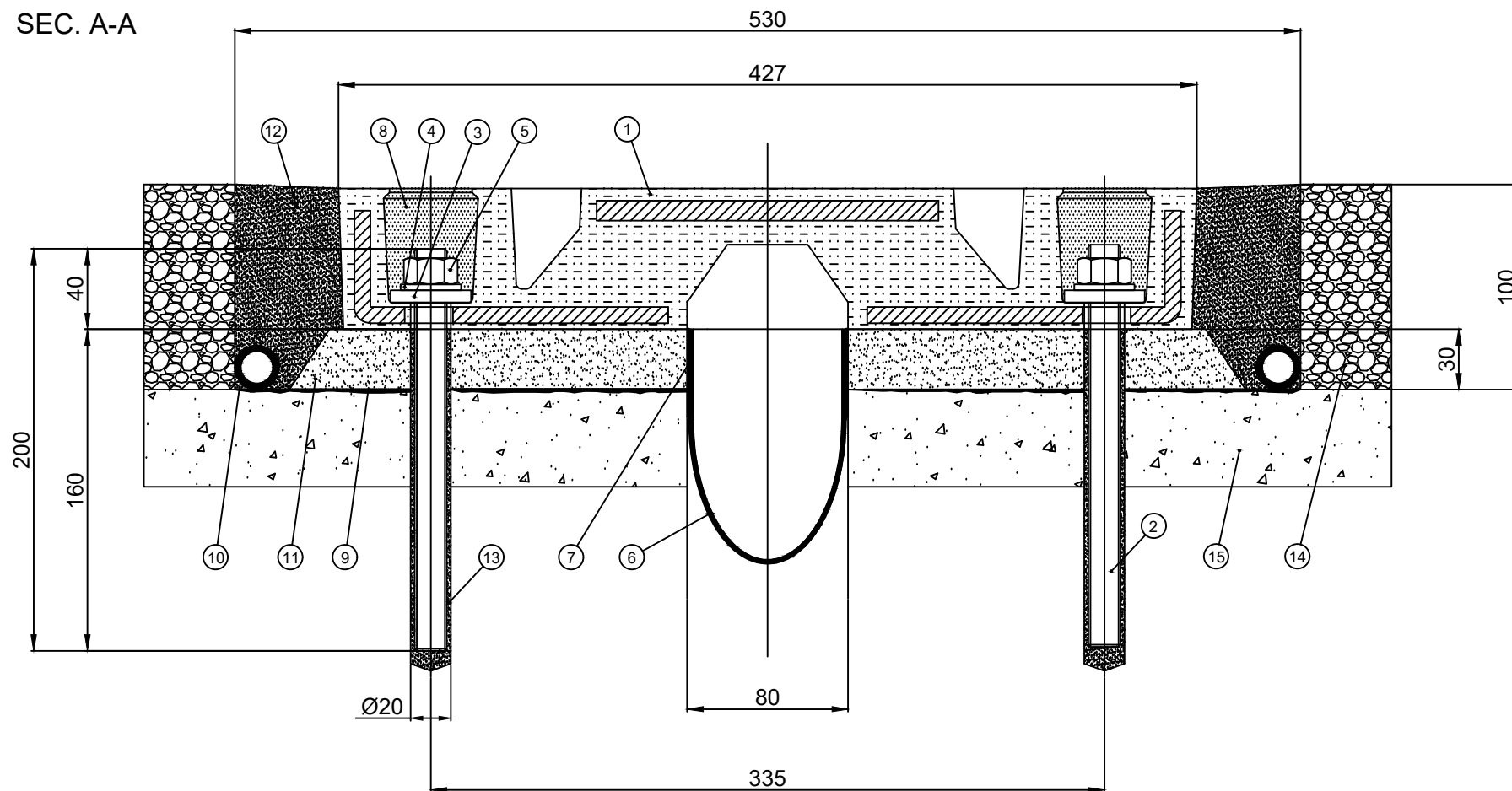


B
DETAIL



C
DETAIL

SEC. A-A



Type	SERVICE movement [mm]	Weight [Kg/pcs]
AGFLEXJ 120	±60	59

(*) on request other standard and compound are possible
 (**) not supplied by AGOM
 (***) on request

15	Concrete	(**)	-	-
14	Asphalt	(**)	-	-
13	Anchor Bar Grouting	-	-	Kimitech EP-AR
12	Transition Strip	(**)	-	Wabocrete II
11	Bedding Mortar	(**)	-	Masterflow 524
10	Draining pipe	(***)	-	PVC ø16 øe22 mm
9	Two-component Epoxide Primer	(**)	-	-
8	Bolt Hole Sealer	-	-	Tecnoseal 88
7	Epoxide Bonding System	-	-	Kimitech EP-TX
6	Waterproof Strip	-	-	NW fabric + rubber
5	Self-locking nuts	M 16	UNI 7474	Steel 6 Zinc Coated
4	Washers	M 16	ISO 7089	Steel Zinc Coated
3	Washers	M 16	DIN 7349	Steel Zinc Coated
2	Anchor Bars	M 16	DIN 975	C40/C45 Zinc Coated
1	Expansion Joint	(*)	CNR10018	Rubber 60 ShA + Steel
POS.	DESCRIPTION	NOTES	STANDARD	MATERIAL

DATE	OBJECT	REVISION
10/08/2018	GENERAL	04
<p>JOINT AGFLEXJ 120</p> <p>AGOM INTERNATIONAL S. r. l. Via Mesero, 12 20010 Ossona (MI)</p>		<p>NOT IN SCALE</p> <p>DRAWN: DC CHECKED: DC APPROVED: MB</p> <p>DRAWING N° 00823/2T</p>
<p>AGOM IDEAS, ENGINEERING AND MANUFACTURE</p> <p>COPYRIGHT RESERVED TO AGOM INTERNATIONAL SRL</p>		