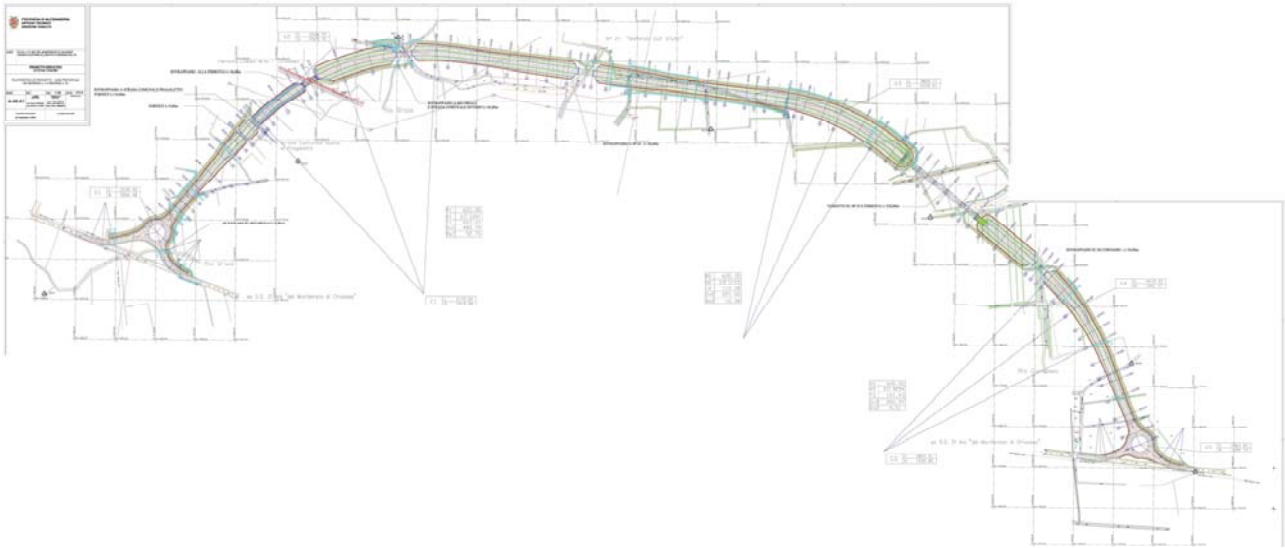


Ring Road of Morano sul Po Ex S.S. 31 bis “Monferrato di Chivasso”



This Ring Road is a 3 km road that goes around the small town of Morano sul Po, in the Po Valley.

It has one carriageway with 2 lines and climbs over the river Cornasso and Oriale, the Railway Line Casale Monferrato-Chivasso, the local road Pragaletto and the S.P. 24. The main bridge is the one that climbs over S.P.25 and the Railway Line, that has 5 spans.



Figures:

- Location: Morano sul Po (VC)
- Owner: Provincia di Alessandria
- Contractor: Morano S.c. a r.l.
- Project: Ring Road to Morano sul Po
- Designer: Studio Corona
- Date: 2010

Involved of Agom International srl:

Agom designed and manufactured:

- N.42 pot bearings: max vertical load 19.600 kN
- 88 m of expansion joint AGFLEXJ
- 25 m of joints for sidewalks

